

Diaphragm Seals

Plastic Model, PN 10 at +20 °C (+68°F)

1/2" BSP or 1/4" BSP female

Model **MDM 7190**

This data sheet contains all important information on all available versions of model MDM 7190. Detailed information on advantages, applications, features and ordering information can be found on our model overview 7000 where you will also find an overview of our other chemical seal series.

Application

Diaphragm seals model 7190 are suitable for aggressive and neutral media that are not gluey or dirty and do not corrode the materials mentioned below. Pressure gauges, pressure switches and transducers up to PN 10 can be attached.

Construction

The diaphragm is fixed between upper and lower part. Measuring instrument and diaphragm seal are mounted onto each other after being filled separately.



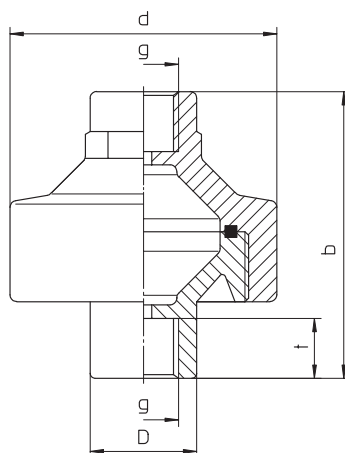
Standard Version

Connection	1/2" BSP female, PCV-U (polyvinyl chloride)
Diaphragm	EPDM, PTFE-coated
Nominal pressure	PN 10 at + 20 °C (+68 °F)
Pressure ranges	Pressure gauges 0-2.5 to 0-10 bar, (0-30 to 0-160 psi) other measuring instruments upon request
Process connection	1/2" BSP female, PVC outside glue joint applicable according to DIN ISO d25d32
Filling fluid	Glyserin
Reference temperature	+20 °C (+68 °F); dial inscription for pressure gauges: tA 20 °C

Special Versions

- Connection 1/4" BSP female
- Process connection female 1/4" BSP, 1/2" NPT or 1/4" NPT,
- Diaphragm Viton
- Diaphragm seal made of PP (polypropylene) or PVDF (polyvinylidene fluoride), process connection outside applicable as weld joint acc. to DIN ISO d25 d32
- Filling fluid according to medium requirements
- Capillary line between diaphragm seal and measuring instruments
Please regard:
 - a mounting device is required for e.g. front flange, rear mounting flange or gauge holder bracket
 - the acceptable length of the capillary line depends on the pressure range und filling fluid, details upon request

Dimensional drawing



Dimensional Data (mm / inches) and Weight (kg / lb)

d	D	h	H	G	Weight (approx.)		
					PVC	PP	PVDF
25 .98	80 3.19	18 .71	137 5.39	1/4" BSP	.25	.18	.31
32 1.26		22 .87			.55	.40	.68
				1/2" BSP	.46	.32	.59
					1.02	.71	1.30

How to Order:

Please regard the detailed information on the required ordering information in our model overview 7000 and the data sheet for the corresponding version.

Model code:	MDM 7190
Process connection:	1/2" BSP-female = standard optional: 1/4" BSP female, others see above
Material:	PVC-U standard (others see above) optional PP or PVDF
Connection:	1/2" BSP-f (others see above) optional: 1/4" BSP female
Specifics:	see above



ARMATURENBAU GmbH
Manometerstraße 5 D-46487 Wesel - Ginderich
Phone: (0 28 03) 9130-0 Fax: (0 28 03) 10 35
armaturenbau.com mail@armaturenbau.com



Subsidiary Company and Sales East Germany and Eastern Europe

MANOTHERM Beierfeld GmbH
Am Gewerbepark 9 • D-08344 Grünhain-Beierfeld
Phone: (0 37 74) 58-0 Fax: (0 37 74) 58-545
manotherm.com mail@manotherm.com

7190
8/09